

**Sustainable**, manufactured from recycled plastic.

**Without maintenance**

**Complies with accessibility regulations.**

**Fábregas**

[www.grupfabregas.com](http://www.grupfabregas.com)



CATALOGUE  
**URBAN  
FURNITURE**



[www.grupfabregas.com](http://www.grupfabregas.com)

[info@grupfabregas.com](mailto:info@grupfabregas.com)

ISO 9001  
BUREAU VERITAS  
Certification



# URBAN BENCHES MODO ECOCITY

Without maintenance

- ▶ Mod. ECOCITY-BENCH-PRM (Recycled Plastic)
- ▶ Mod. ECOCITY-BENCH-WPC (Technical Wood)



See differences between PRM and WPC



- **Sustainable**  
Fully made from recycled plastic  
(5 slats and 3 legs in recycled material)
- **Without maintenance**
- **Complies with accessibility regulations**



- ▶ Mod. ECOCITY-SILLA-PRM
- ▶ Mod. ECOCITY-SILLA-WPC



Complies with accessibility regulations

# URBAN LITTER BIN MODO ECOCITY

Without maintenance

- ▶ Mod. ECOCITY-PAPELERA

- **Made from recycled plastic**
- **Easy handling and installation**
- **Maximum functionality**



Corten imitation wood finish

Equipped with stainless steel bag holder ring



## URBAN BENCHES SERIE MARINA MAR

► Mod. C-1006-MAR-GC



- Treated and painted steel with a matte cardboard finish.
- Certified tropical wood slats.

► Mod. C-1006-MAR-SILLA-GC



Can Batlló - Barcelona

## URBAN BENCHES SERIE MARINA MAR

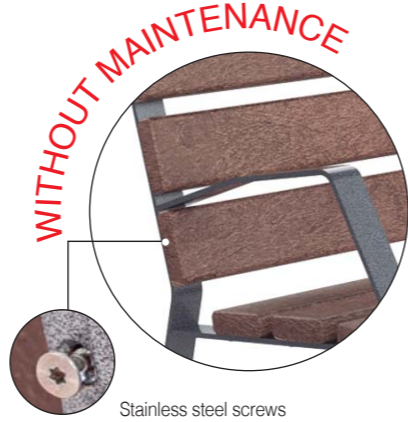
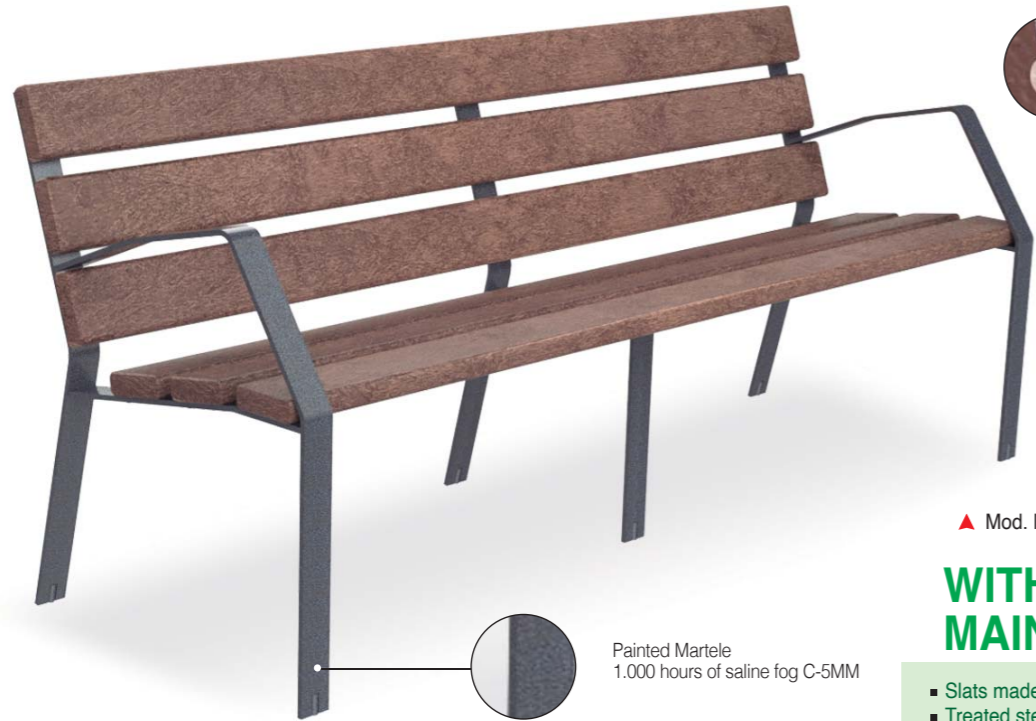
► Mod. MARINA MAR-BANCO



Can Batlló - Barcelona

# URBAN BENCHES MODO08

 RECYCLED POLYMER



Stainless steel screws

▲ Mod. MODO08-1800A-PRM

**WITHOUT MAINTENANCE**

- Slats made from 100% recycled plastic.
- Treated steel legs finished with hammer paint.
- Maintenance-free, made from urban waste.

Painted Martele  
1.000 hours of saline fog C-5MM

# BENCH MODO08 FOUNDRY



## WPC

► Mod. MODO08A-1800-WPC

- Slats made with 100% recycled material (50% recycled plastic and 50% Biomass - rice husk) composite mix.
- Steel legs treated and painted in hammered color.



Optional

## TROPICAL WOOD

► Mod. MODO08-1800

- Tropical wood slats.
- Cast iron legs painted in hammered color.
- ACCM certified bank.



**ACCM**  
PRODUCCIÓN  
CERTIFICADA  
Nº: CP-16-16-101-1



Optional

## FSC PINE WOOD

► Mod. MODO08-1800-PC

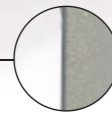
- Autoclaved pine wood slats.
- Cast iron legs painted in hammered color.



# URBAN BENCHES MODO10

- ▶ Mod. MODO10-1800
  - 7 tropical wood slats
  - Stainless steel screws



 Anodized aluminum (AG3)



▶ Mod. MODO10-3000



▶ Mod. MODO10-1800-PC

- Aluminum foot
- Pine slats



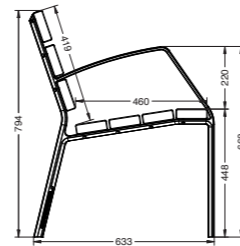
▶ Mod. MODO10-1800-AL

- Aluminum foot
- Aluminum slats



▶ Mod. MINIM10
 

- Painted steel foot
- Robinia wood slats



## MINIM 10 SERIES



▲ CHAIR  
Mod. MINIM10-SILLA



▲ SEAT  
Mod. MINIM10-BUTACA



▲ DECK CHAIR  
Mod. MINIM10-TUMBONA



▲ TABLE  
Mod. MINIM10-MESA



▲ SIDEWALK  
Mod. MINIM10-BANQUETA



Mercat de Sant Antoni - Barcelona

## URBAN FURNITURE

### ZENIT 106

- ▶ Mod. C-1002-106-INOX
- ▶ Mod. C-1002-106-MAR



### ZENIT

- ▶ Mod. C-1002-INOX
- ▶ Mod. C-1002-MAR



### ZENIT LOUNGE

- ▶ Mod. C-1002-LOUNGE



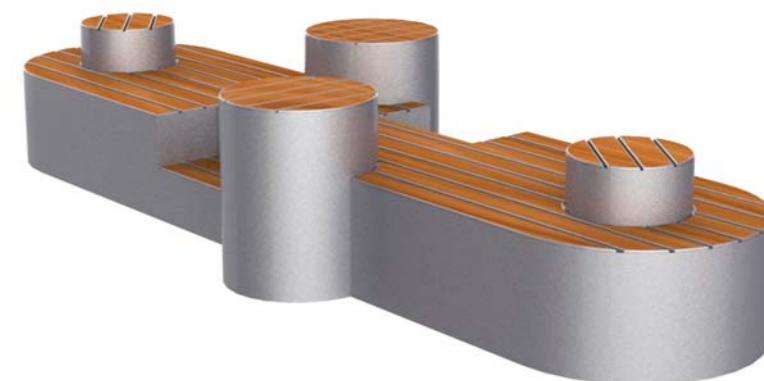
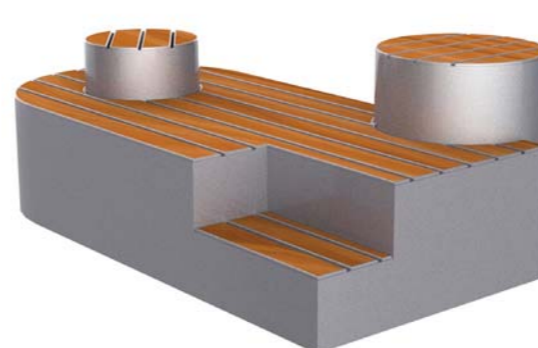
## NEW - TATAMI MODEL

### URBAN BENCHES

#### MODELO TATAMI

- ▶ Mod. TATAMI

- Completely modular, they can be connected to create large islands.
- The three seating platforms bring a new vision to public spaces.
- Made of treated steel and tropical wood.



#### URBANCITY

- ▶ Mod. C-1025-CON



#### URBANCITY

- ▶ Mod. C-1025-SIN



### ZENIT LOUNGE

- ▶ Mod. C-1002-LOUNGE

## ZEUS METALLIC SERIES

► Mod. C-1008-MET-MAR



► Mod. C-1008-MET-BLA



► Mod. C-1008-MET-MAR-M  
► Mod. C-1008-MET-BLA-M



► Mod. C-1008-MET-MAR-MR  
► Mod. C-1008-MET-BLA-MR



## URBAN FURNITURE BENCHES IN STEEL AND IRON CAST

### LA FOREST

► Mod. C-1011  
FOUNDRY



### MAVERIK

► Mod. C-1018  
STEEL



Shrine of Nuestra Señora - Huelva



**ZEUS IN CONCRETE**

- ▶ Mod. C-1008-GRI
- ▶ Mod. C-1008-MESA GRI

**URBAN FURNITURE**  
CONCRETE BENCHES AND PLANTERS

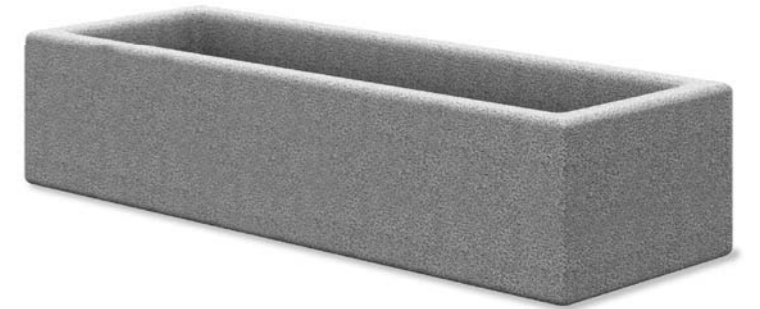
**BENCH HEBA**

- ▶ Mod. C-1020-GRI



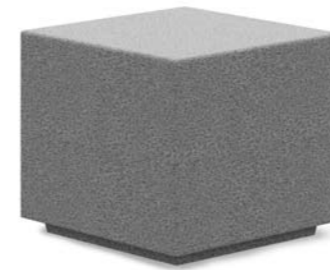
**PLANTER HEBA**

- ▶ Mod. J-1020-GRI



**HEBA CUB**

- ▶ Mod. C-1021-GRI



**URBAN FURNITURE**  
CONCRETE BENCHES AND TABLE

**BENCH RODAS**

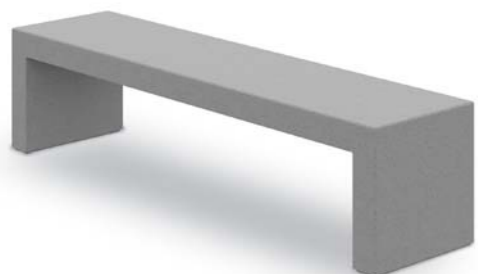
- ▶ Mod. C-1029-GRI



**NOVELTY**

**BENCH ZEUS**

- ▶ Mod. C-1008-GRI



**TABLE ZEUS**

- ▶ Mod. C-1008-MESA GRI



- ▶ Mod. C-1020-GRI

- ▶ Mod. C-1021-GRI



# URBAN FURNITURE

## CONCRETE BENCHES AND PLANTERS

### DELOS

► Mod. J-1022-GRI



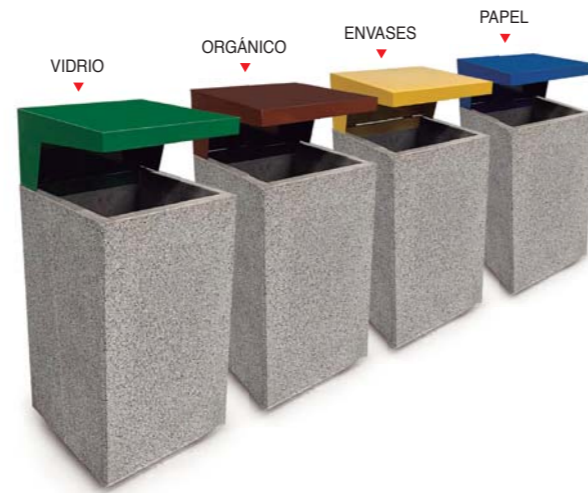
### SIRIS

► Mod. C-2022  
80 L



### ARES

► Mod. C-2021



# URBAN FURNITURE

## URBAN BENCHES

### DIANA

► Mod. C-109



### DIANA SIN

► Mod. C-109-SIN



### RONDA

► Mod. C-103



### TAULÓ

► Mod. C-1023-PC



### MODO CLÁSICO

► Mod. C-106



### ALPINO

► Mod. C-108-GC



Isabel II Park - Madrid

## URBAN FURNITURE

### PICNIC TABLES

#### E-PICNIC

► Mod. E-PICNIC-1006-OX



#### E-PICNIC-GREEN

► Mod. E-PICNIC-GREEN



#### E-PICNIC-106

► Mod. E-PICNIC-106



#### E-PICNIC

► Mod. E-PICNIC



## RECYCLED POLYMER

#### E-PICNIC-ECO

► Mod. E-PICNIC-ECO  
Recycled plastic slats and legs



## URBAN BINS

#### ARCO IRIS STEEL

► Mod. C-2012  
80 L



#### SPIRAL STEEL

► Mod. C-2016  
80 L



#### PORTALÓ STEEL

► Mod. C-2001  
80 L



#### BARCELONA STEEL

► Mod. C-23G  
► Mod. C-23GE  
60 L



#### BARCELONA STEEL

► Mod. C-23GC  
60 L



#### BARCELONA STEEL WITH COVER

► Mod. C-23GT  
60 L



#### CERDANYOLA STEEL

► Mod. C-21C  
60 L



#### SCUDERIA STEEL

► Mod. C-2009  
60 L



#### TRAMONTANA FOUNDRY

► Mod. C-23F  
60 L



# URBAN BINS

## AMG STEEL

► Mod. C-2004  
80 L



## COSTA STEEL AND WOOD

► Mod. C-2002  
80 L



## RADIAL STEEL

► Mod. C-2013  
80 L



## SCUDERIA POLIETILENO POLYETHYLENE

► Mod. C-2009-PLAST  
60 L



**NEW  
BUCKET WITHOUT BAG**



► Ref. C-2009-PLAST-CUB

## LUCENTUM POLYETHYLENE

► Mod. P-201  
55 L



## TOSCANA POLYETHYLENE

► Mod. P-200  
60 L



## IBIZA PLAST POLYETHYLENE

► Mod. P-231  
80 L  
► Mod. P-231  
120 L

**NEW**



## SALOU WOOD

► Mod. C-21S TROPICAL  
60 L  
► Mod. C-21S PINO  
60 L



## ROMA POLYETHYLENE

► Mod. C-2025  
180 L



## SIRIS CONCRETE

► Mod. C-2022  
80 L



## TULIPA 2024 STEEL

► Mod. C-2024  
80 L



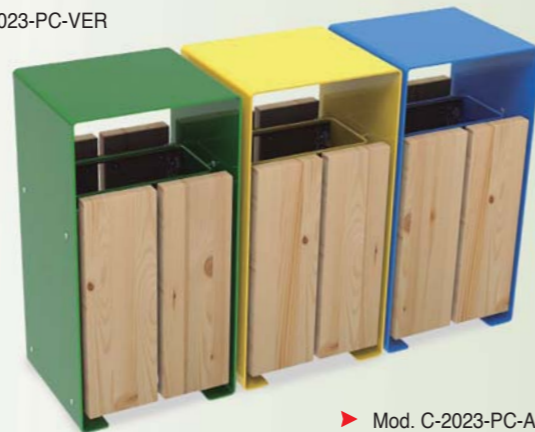
## TAULÓ STEEL AND WOOD

► Mod. C-2023  
60 L



## RECYCLING PACK

► Mod. C-2023-PC-VER



► Mod. C-2023-PC-AZU

► Mod. C-2023-PC-AMA

## ALVIUM BEACH POLYETHYLENE

► Mod. P-1018-BEACH  
120 L



The base is **embedded**  
in the sand / floor

## ALVIUM URBAN POLYETHYLENE

► Mod. P-1018-URBAN  
120 L



The base is **screwed**  
to the ground



## PLANTERS

### NEWPORT WOOD / STEEL

▶ Mod. J-9



### BARCELONA FOUNDRY

▶ Mod. J-1 Ø 130 cm  
▶ Mod. J-2 Ø 90 cm



### DIAGONAL ACERO

▶ Mod. J-51



### GALA STEEL

▶ Mod. J-53



### DORI STEEL

▶ Mod. J-19



### FUTURA POLYETHYLENE

▶ Mod. P-300  
Ø 1000 x 500



### SERIE HEBA

▶ Mod. C-1020-PLAST-BLA  
▶ Mod. J-1021-PLAST-BLA



## ONA PLANTERS SERIES IN IRON CAST



### ONA RECTANGULAR

- ▶ Mod. J-18  
100 x 35 cm



### ONA RECTANGULAR-75

- ▶ Mod. J-18-75  
75 x 45 cm



### ONA CUADRADA

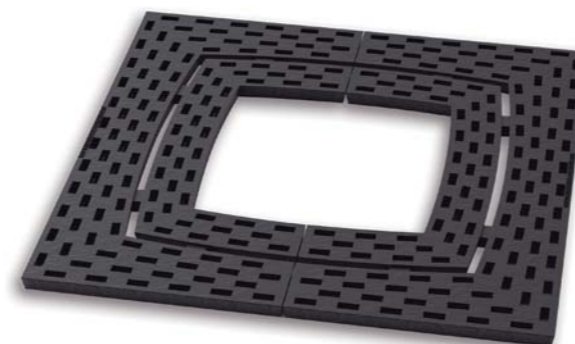
- ▶ Mod. J-18-70  
70 x 70 cm



## TREE GRILLS

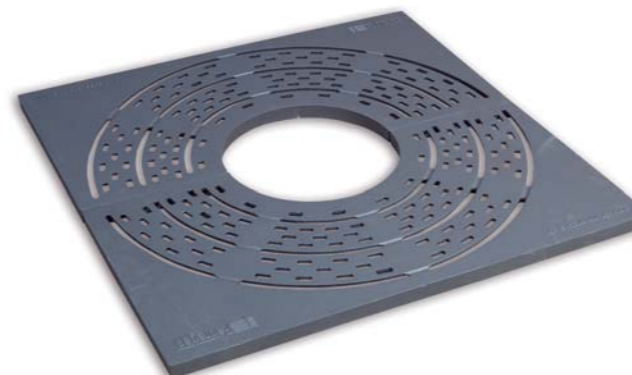
### ESTADI

- ▶ Mod. I-200
- ▶ Mod. I-200-80



### NIU

- ▶ Mod. I-700-80
- ▶ Mod. I-700-100



### E-TEIXIDO

- ▶ Mod. E-TEIXIDO-C100
- ▶ Mod. E-TEIXIDO-C120



### E-TEIXIDO

- ▶ Mod. E-TEIXIDO-L80
- ▶ Mod. E-TEIXIDO-L100
- ▶ Mod. E-TEIXIDO-L120
- ▶ Mod. E-TEIXIDO-L140





## FOUNTAINS

### FUENTE ALVIUM

- ▶ Mod. V-1017 2 grifos
- ▶ Mod. V-1017-1 1 grifo



### MINUS

- ▶ Mod. V-102



### MINUS SIMPLE

- ▶ Mod. V-102M



### MINUS DOG

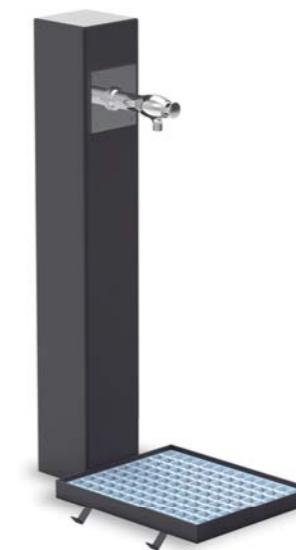
- ▶ Mod. V-102D



### GALDANA

- ▶ Mod. C-14

**NEW  
IN POLYETHYLENE**



### DOG

- ▶ Mod. C-14 DOG



## ASHTRAYS

**ASHTRAY  
STANDING**  
▶ Mod. CE-3



**INOX**  
▶ Mod. CE-2



**INOX**  
▶ Mod. CE-4



## FENCE PARK

**FENCE PARK 2 METERS LONG**  
▶ Mod. PARC-500

- Metal posts and crossbars.
- Colored polyethylene slats.



### SLATS IN POLYETHYLENE

2 METERS

## BIKE RACKS

**ONA**  
▶ Mod. A-03



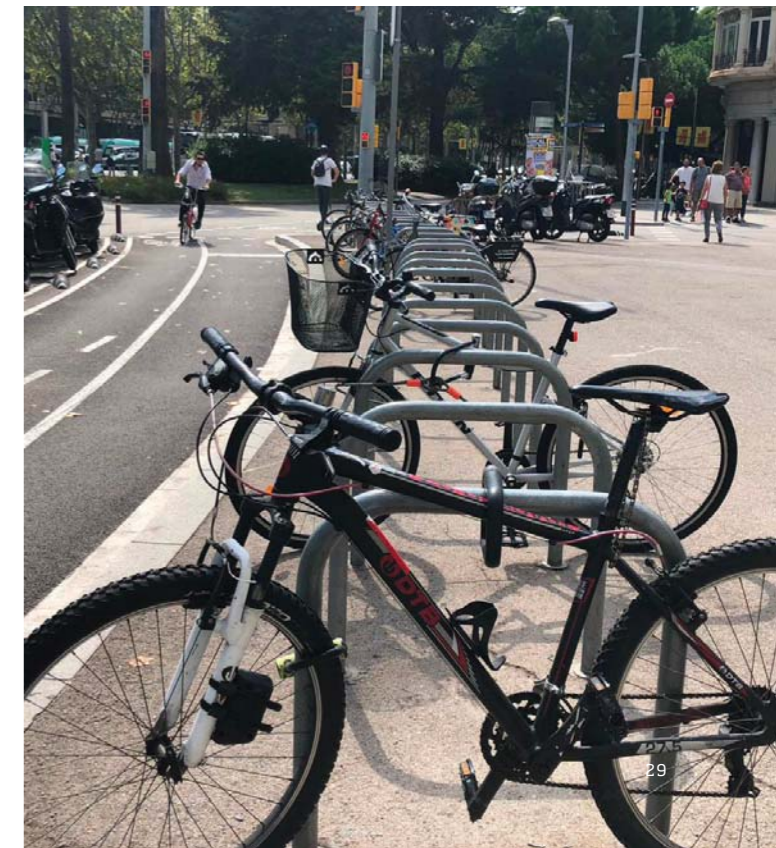
**COPENHAGUEN**

▶ Mod. A-04



## BARCELONA

▶ Mod. A-06 / Mod. A-06 INOX



# FLEXIBLE BOLLARDS

## TOTAL FLEXIBLE

## SOFT FLEXIBLE BOLLARDS

## 30 DREGEES FLEXIBLE

<p><b>Mod. C-430-TPU</b> Bollard BCN Polyurethane *Detachable option</p> <p><b>Certified product</b> <b>ACCM</b> N°: CP-16-16-101-2</p>	<p><b>Mod. C-430-TPU PLUS</b> Bollard BCN Polyurethane *Detachable option</p> <p><b>Certified product</b> <b>ACCM</b> N°: CP-16-16-101-2</p>	<p><b>Mod. C-430-TPU 1200-PLUS</b> Bollard BCN Polyurethane *Detachable option</p>	<p><b>Mod. C-430-TPU-ARO-AT</b> Base to screw TPU bollards Made of Polypropylene</p>	<p><b>Mod. C-430-TPU-80-BC2-AMA</b> Bollard BCN Polyurethane with reflective strip</p>	<p><b>Mod. C-430-TPU-PLUS-80-EM1</b> Bollard BCN Polyurethane with reflective strip</p>	<p><b>Mod. H-750-AT-NAR</b> Bolt-on bollard down Polyurethane</p>	<p><b>Mod. HITO H-75</b> Polyethylene</p>	<p><b>Mod. P-41P</b> Sant Feliu Polypropylene</p>	<p><b>Mod. C-430</b> Bollard BCN Polypropylene *Detachable option</p> <p><b>Certified product</b> <b>ACCM</b> N°: CP-16-16-101-2</p>
---	--	--	--	--	---	---	---	---	--



\*REMOVABLE OPTION BASE

For Models:  
C-430-TPU  
C-430-TPU PLUS  
C-430-TPU 1200-PLUS  
C-430

# TOTAL FLEXIBLE

## POLYURETHANE

► Mod. C-430-TPU

**Certified product**  
**ACCM**  
N°: CP-16-16-101-2

Videos: <https://youtu.be/siPI0qn5tc>  
<https://youtu.be/awUYdnZmCTc>



# BIKE LANE SEPARATORS

- Mod. A-SKATE-G-BCN 820 x 200 x 127 mm
- Mod. SKATE-M-BCN 748 x 180 x 80 mm
- Mod. A-SKATE-P-BCN 748 x 180 x 45 mm
- Mod. A-LOOP-G 820 x 200 x 130 mm
- Mod. A-LOOP-M 750 x 180 x 80 mm



**EPD®** THE INTERNATIONAL EPD® SYSTEM

**PRODUCTO NEUTRO EN EMISIONES**

**WITH TECHNICAL ASSISTANCE lavola**

**MATERIAL AMORTIZED RECYCLING RECOVERABLE ECO FRIENDLY**

**CARBON FOOTPRINT** 10,6kg CO<sub>2</sub> eq/kg

# DECELERATORS

- DECELERATOR RE-1**
- Mod. RE-1 505x405x50 mm
  - Mod. RE-1-FM 250x405x50 mm
  - Mod. RE-1-FH 250x405x50 mm
- DECELERATOR RE-3-50x60**
- Mod. RE-3-50x60 505x606x30 mm
  - Mod. RE-3-50x60-H 200x606x30 mm
  - Mod. RE-3-50x60-M 200x606x30 mm
- DECELERATOR RE-5-50x60**
- Mod. RE-5-50x60 505x606x50 mm
  - Mod. RE-5-50x60-H 200x606x50 mm
  - Mod. RE-5-50x60-M 200x606x50 mm







**Urbancity  
Ibérica** S.L.U.

**URBANCITY IBÉRICA**  
Montduber, 3  
46960 Aldaia  
VALENCIA (SPAIN)  
Tel. +34 96 151 53 44  
Fax +34 96 151 75 65



Parques y Jardines Fábregas S.A.U.

**PARQUES Y JARDINES FÁBREGAS**  
Gran Bretanya, 41 (Pol. Ind. Les Comes)  
08700 Igualada  
BARCELONA (SPAIN)  
Tel. +34 93 805 11 25  
Fax +34 93 803 27 31



[www.grupfabregas.com](http://www.grupfabregas.com)

[info@grupfabregas.com](mailto:info@grupfabregas.com)