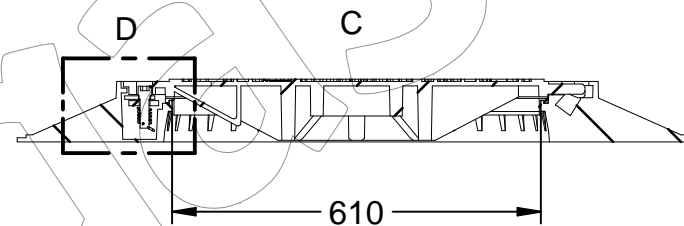
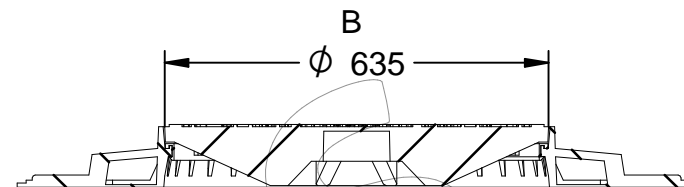
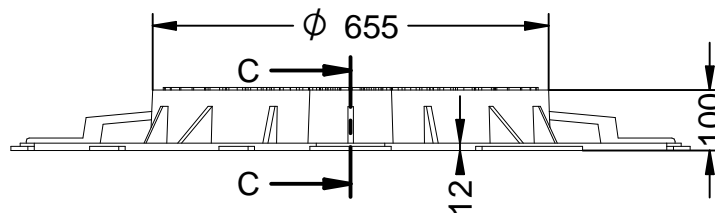
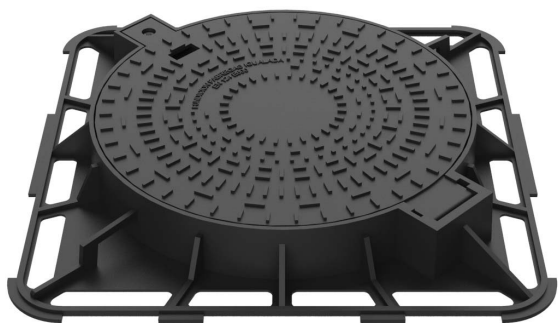


R-2-E600

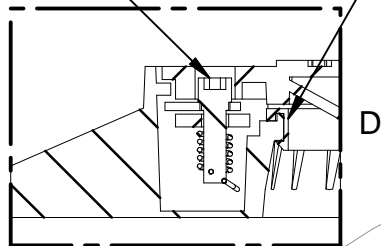
Tapa y marco de pozo abatible y con cierre anti-robato.

Revision: 01 - 09/02/2021

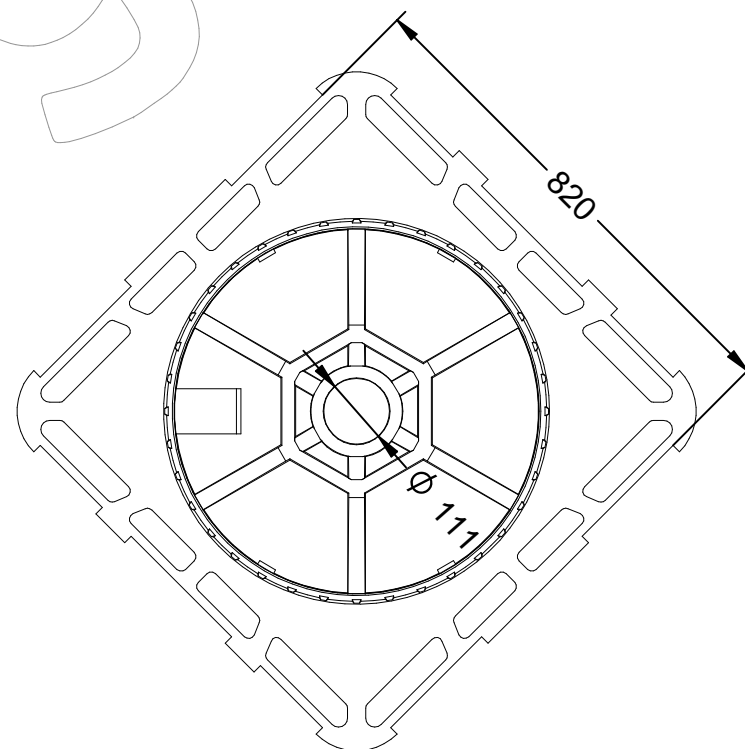
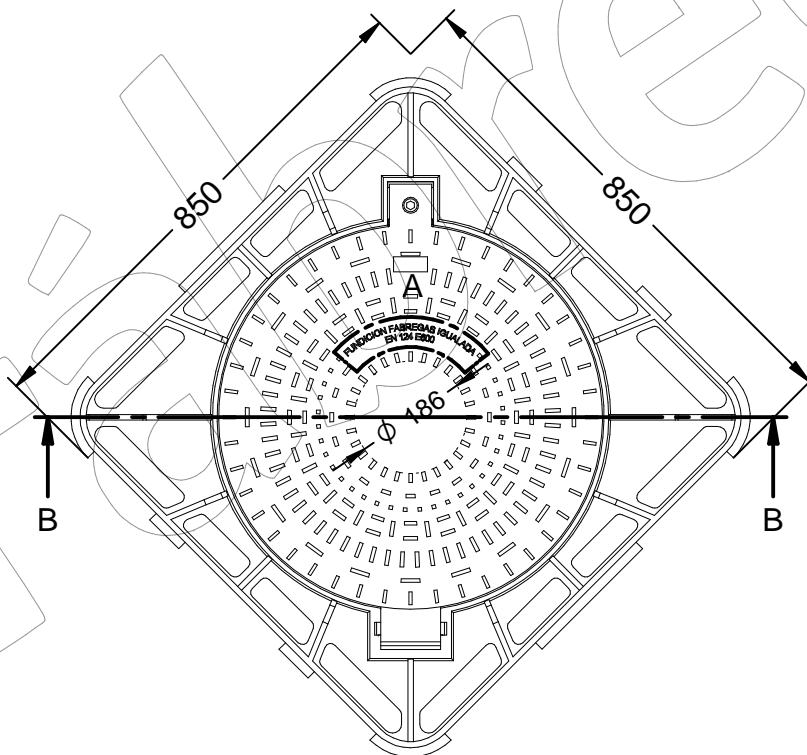


Tornillo allen

Junta de insonorización



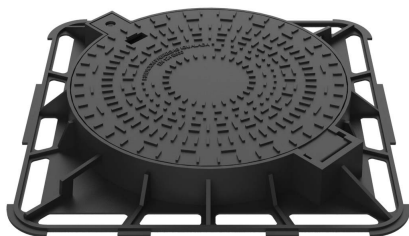
A



R-2-E600

Tapa y marco de pozo abatible y con cierre anti-robo.

Revision: 01 - 09/02/2021



-ES- 

Descripción: Tapa y marco de pozo abatible y con cierre anti-robo.

Material: Fundición Dúctil EN-GJS-500-7.

Acabado: Pintado negro asfáltico.

Norma: EN 124-2.

Clase: E 600.

Embalaje: Paletizado y plastificado.

-EN- 

Description: Folding well cover and frame with anti-theft lock.

Material: Ductile Iron EN-GJS-500-7.

Paint finish: Asphalt black painted.

Standard: EN 124-2.

Class: E 600.

Packaging: Palletized and laminated.

-PT- 

Descrição: Tapa do poço dobrável e moldura com trava anti-roubo.

Material: Ferro dúctil EN-GJS-500-7.

Acabamento: Asfalto pintado de preto.

Padrão: EN 124-2.

Classe: E 600.

Embalagem: Paletizada e laminada.

-CA- 

Descripció: Tapa i marc de pou abatible i amb tanca anti-robatori.

Material: Fosa Dúctil EN-GJS-500-7.

Acabat: Pintat negre asfàltic.

Norma: EN 124-2.

Classe: E 600.

Embalatge: Paletitzat i plastificat.

-FR- 

Description: Couvercle de puits pliable et cadre avec serrure antivol.

Matériau: Fonte ductile EN-GJS-500-7.

Finition: Peinture noire asphalte.

Norme: EN 124-2.

Classe: E 600.

Emballage: Palettisé et laminé.