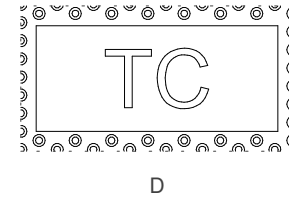
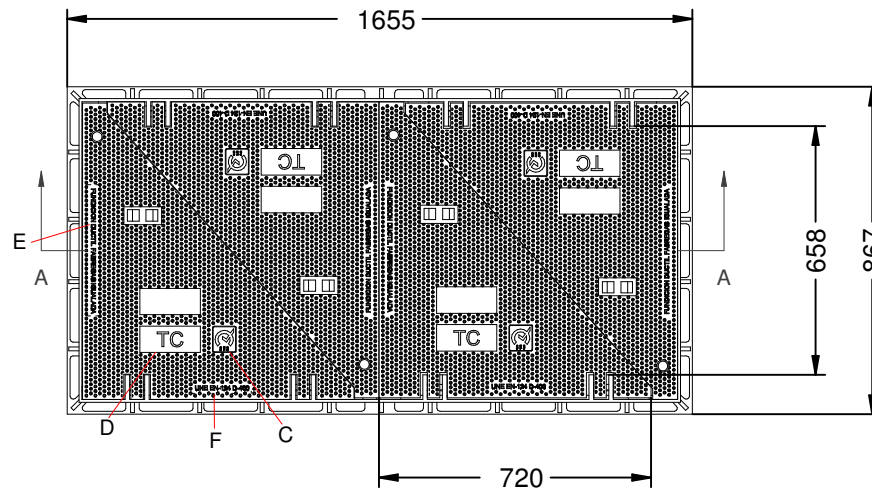
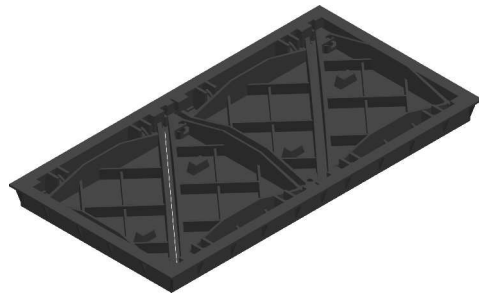
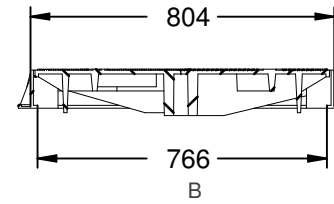
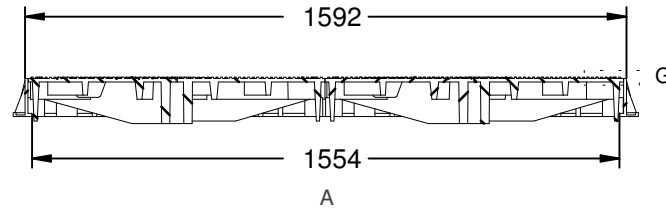
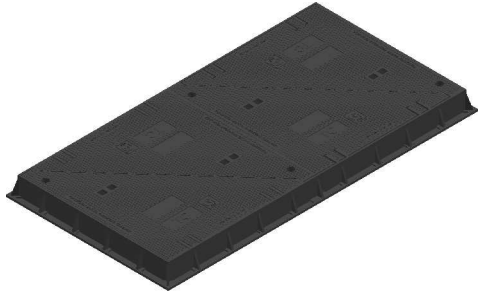


FO-4

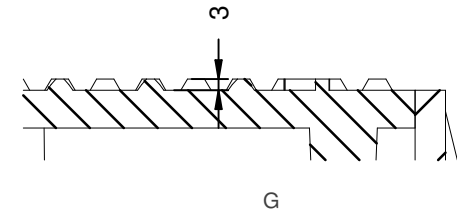
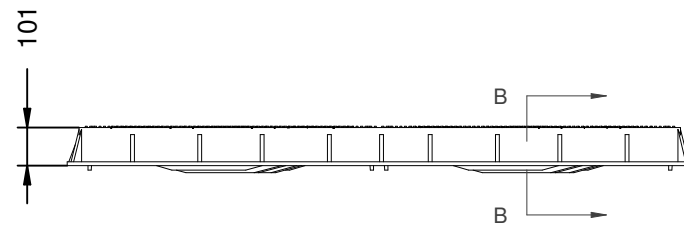
Tapas (4) y marco Modelo FO-4.

Revision: 01 - 0./11/2016



FUNDICION DUCTIL FABREGAS IGUALADA

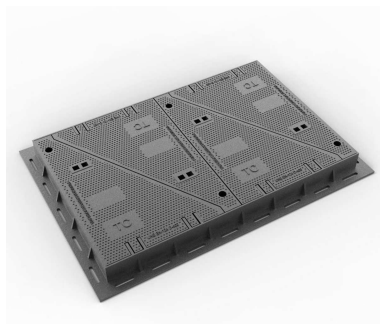
UNE EN-124 D-400



FO-4

Tapas (4) y marco Modelo FO-4.

Revision: 01 - 0./11/2016



-ES-

Material: Fundición dúctil EN-GJS-500-7.

Acabado: Pintado negro asfáltico.

Norma: UNE-EN 124.

Clase: D-400.

Embalaje: Paletizado y plastificado.

Esfuerzo de levantamiento: 26 Kgrs.

-CA-

Material: Fundició dúctil EN-GJS-500-7.

Acabat: Pintat negre asfàltic.

Norma: UNE-EN 124.

Classe: D-400.

Embalatge: Paletitzat i plastificat.

Esforç d'aixecament: 26 Kgs.

-EN-

Material: ductile iron EN-GJS-500-7.

Paint finish: Painted black asphalt.

Rule: UNE-EN 124.

Class: D-400.

Packing: Palletizing and plasticized.

Required force to open: 26 kgs.

-FR-

Matériel: EN-GJS-500-7 en fonte ductile.

Finition: Peint asphalte noir.

Règle: UNE-EN 124.

Classe: D-400.

Emballage: Palettisation et plastifié.

Effort de levage: 26 Kgs.

-PT-

Material: EN-GJS-500-7 ferro fundido dúctil.

Acabamento: Pintado asfalto preto.

Regra: UNE-EN 124.

Classe: D-400.

Embalagem: Paletização e plastificado.

Esforço levantar: 26 Kgs.