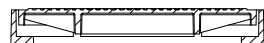
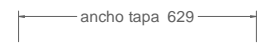


# CL-1

Conjunto tapa y marco para arquetas valvulas

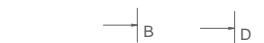


CORTE G-G  
1:20



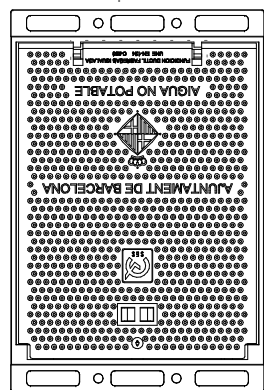
cota de paso 550

CORTE A-A  
1:20

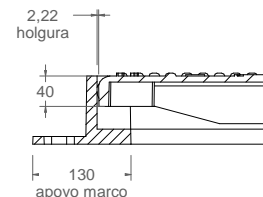


90 altura marco

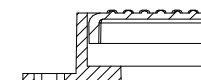
vista alzado  
1:20  
F



vista en planta  
1:20



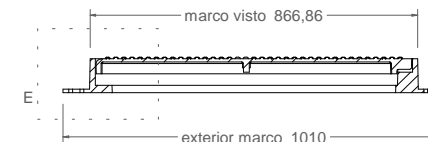
DETALLE C  
1:10



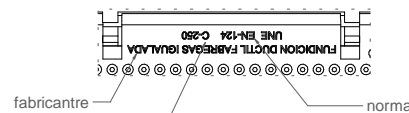
DETALLE E  
1:10



CORTE B-B  
1:20



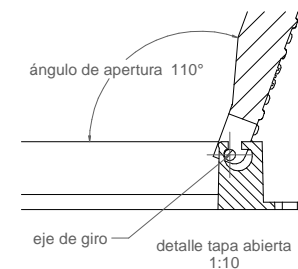
CORTE D-D  
1:20



DETALLE F  
1:10

M27

detalle cierre  
1:10



Material: Fundicion ductil GGG40

Peso:

Tapa: 52,724 kg  
Marco: 50,822 kg  
Conjunto: 103,607 kg

Acabado: Pintado negro asfáltico

Norma: UNE EN-124

Clase: C-250

Producto certificado por SGS

Características:

Tapa abatible, apertura hasta 110° y extraíble a 90°  
Cierre de seguridad anti-robo con llave de doble pala.