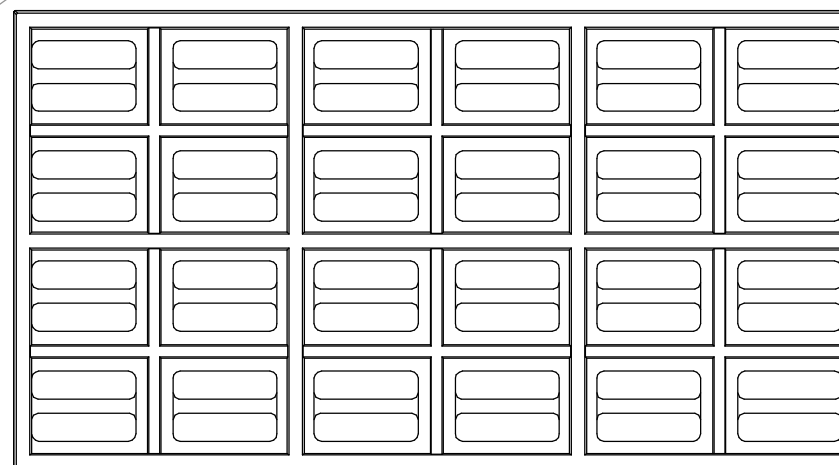
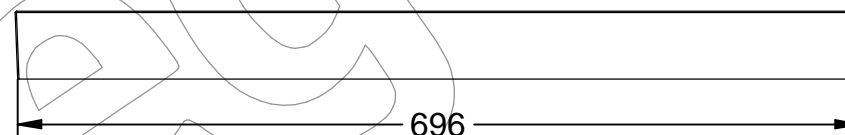
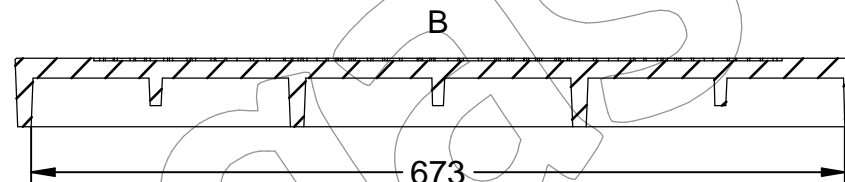
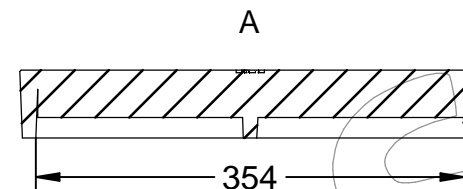
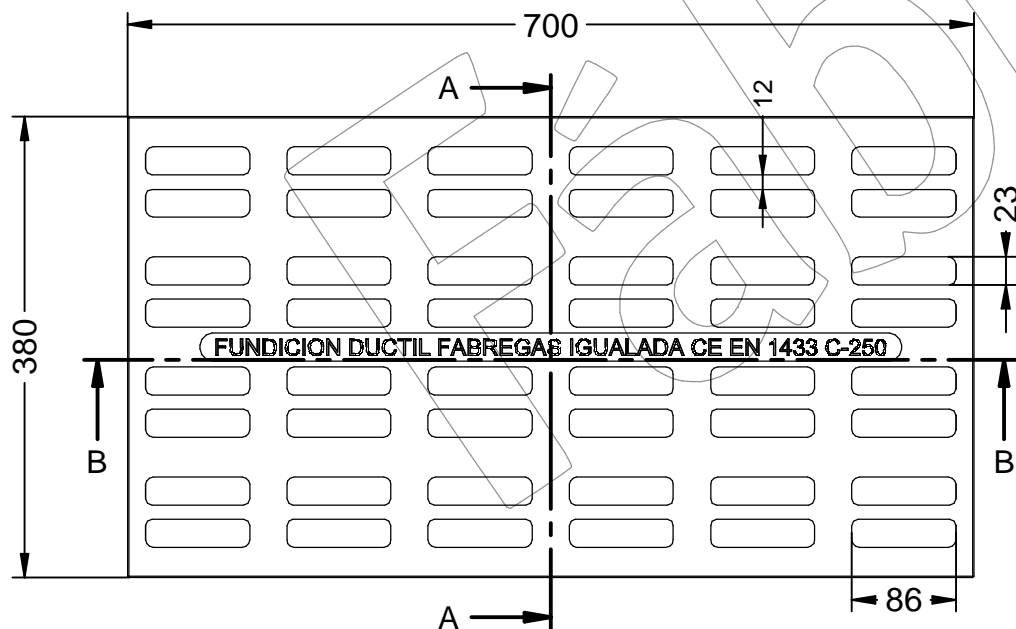
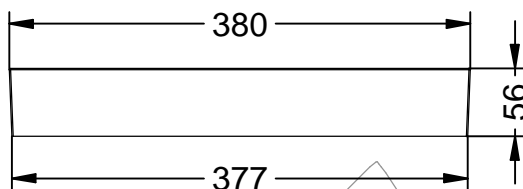
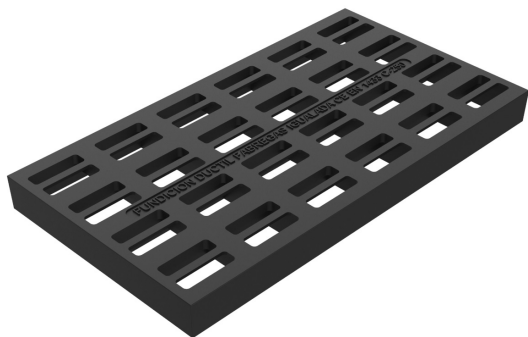


B-30ID

Reja corta-aguas.

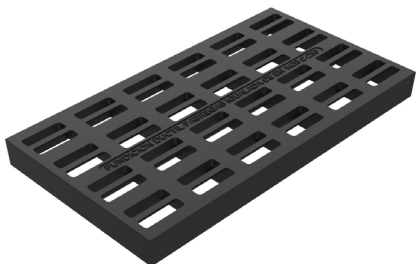
Revision: 01 - 29/05/2023



B-30ID

Reja corta-aguas.

Revision: 01 - 29/05/2023



-ES- 

Descripción: Reja corta-aguas.

Material: Fundición Dúctil EN-GJS-500-7.

Acabado: Pintado negro asfáltico.

Norma: EN 1433.

Clase: C 250.

Embalaje: Paletizado y plastificado.

Superficie de absorción: 936,86 cm².

-EN- 

Description: Water fence.

Material: Ductile Iron EN-GJS-500-7.

Paint finish: Painted black asphalt.

Standard: EN 1433.

Class: C 250.

Packaging: Palletized and laminated.

Absorption surface: 936,86 cm².

-PT- 

Descrição: Cerca d'água.

Material: Ferro dúctil EN-GJS-500-7.

Acabamento: Asfalto pintado de preto.

Norma: EN 1433.

Classe: C 250.

Embalagem: Paletizado e laminado.

Superfície de absorção: 936,86 cm².

-CA- 

Descripció: Reixa curta-aigües.

Material: Foneria Dúctil EN-GJS-500-7.

Acabat: Pintat negre asfàltic.

Norma: EN 1433.

Classe: C 250.

Embalatge: Paletitzat i plastificat.

Superfície d'absorció: 936,86 cm².

-FR- 

Description: Clôture d'eau.

Matériau: Fonte ductile EN-GJS-500-7.

Finition: Asphalte peint en noir.

Norme: EN 1433.

Classe: C 250.

Conditionnement: Palettisé et laminé.

Surface d'absorption: 936,86 cm².